



BROCHURE

---

AVEVA Plant Scada (Formerly Citect Scada)



AVEVA

PRODUCT DATASHEET

# AVEVA™ Plant SCADA

(formerly Citect SCADA)

## **Commitment to operator empowerment and engineering efficiency**

AVEVA Plant SCADA is a leading high-performance Supervisory Control and Data Acquisition (SCADA) software solution for industrial process customers. Superior operational context and built-in functionalities help consolidate, simplify, and optimize control; empowering operators to streamline their operations for efficiency, reliability, and safety.

# Overview

---

AVEVA Plant SCADA is a key pillar of our monitoring and control industrial software suite. Building on the developments of Citect SCADA 2018 R2 with a focus on integration and interoperability with the AVEVA Operations portfolio, Plant SCADA integration of Industrial Graphics alongside the already powerful native graphics capabilities, together with a focus on communications, engineering efficiency and an ongoing commitment to Cyber Security.

## Key benefits:

- Engineering Cost Reductions with a host of contextual improvements that simplify project design and management
- Enhanced Operator Awareness with navigation zone and alarm indicators saving valuable time in diagnosing process anomalies
- Increased Production Efficiency with new contextual workspace that simplifies the operator experience and facilitates timely decision making and reduces risk of downtime
- Extended operational value with native integration to our AVEVA Industrial Software portfolio
- Mobile extension capabilities with Access Anywhere via HTML5-compliant web browsers
- Alignment with Abnormal Situation Management industry best practice guidelines

## What's new

The latest release of Plant SCADA includes a range of new functionality to make your data more accessible, through native HTML5 visualization for read-only access to our new Industrial Graphics from a browser, tablet, or smartphone, and improvements in communications.

## AVEVA industrial graphics

AVEVA Industrial Graphics provides a new thin client solution for the delivery of HTML5 graphics to desktop browsers and mobile devices. This consists of a new modern graphics editor, new graphics technology, and new web client runtime experience offering HTML5 visualization, all available alongside the existing Graphics Builder editor, legacy Graphics format, and high-performance desktop runtime.

## Improved connectivity (IPv6, OPC-UA server)

In Plant SCADA 2020 R2, IPv6 addresses are supported throughout the configuration, including PC Network Addresses, I/O Devices (for supported drivers), Servers and Clients. In addition, Plant SCADA supports native OPC-UA server functionality to share your plant data throughout your organization.

A new Connectivity Server component has been created to be the foundation of OPC-UA communications, and to serve data updates to drive animations within our new HTML5 graphics.



Context-aware workspace



Library of configurable objects



Alarm management enhancements

## Other enhancements

In addition to the keynote features mentioned above, the following enhancements are also now available within Plant SCADA 2020 R2:

- Determine usage of Graphics Library items throughout your project (integrated for both legacy Graphics and new Industrial Graphics Libraries) within Plant SCADA Studio IDE
- Persistent GoTo Object dialog settings within Graphics Builder
- Display dialogs from Graphics Builder on correct monitor
- Hide 'Add' button in Special Days view of the BACnet Scheduler at runtime

## Security enhancements

- Reduced permissions for running Plant SCADA with support for running under Virtual Service Accounts
- User Groups now able to restrict access to configuration files (including those on deployment server/client), as well as access to the Plant SCADA configuration tools
- Enhanced IT management with support for mapping of security groups to Windows Domain groups including security configuration for Deployment, support for Domain groups within Local groups, and support for authentication of Windows users through CtAPI (so you don't have to manage local users)
- Extended encryption through to ActiveX Web Server connections

## Key features:

---

### Context-aware workspace

- A dedicated out-of-the-box Situational Awareness Workspace that provides flexible, consistent, rich context for operators, as well as a new way to build context-aware SCADA visualization
- Equipment-driven interface provides operators with real-time, holistic situational context to help improve efficiency and facilitate timely corrective action

- Seamlessly integrated Alarming, Trending, Interlocks and Control data together in a single interface, across multiple monitors without the need for coding
- All helping to minimize visual distractions for operators, enabling timely decision making and helping to mitigate risk and operational downtime

### Comprehensive equipment library

A wide selection of configurable symbols that follow industry best practice for Situational Awareness including:

- Drives
- Valves
- Meters
- Data and UI elements
- Mining objects
- Polar star
- Bar graph
- Wind compass
- Out-of-the-box symbol library significantly reduces time building graphics while giving the flexibility to customize objects to suit your unique needs
- Improvements in graphics system and new workspace concept substantially reduces time building complex layouts
- Pinned windows, named animations, animated polyline vertices to help simplify the engineering experience

### Enhanced alarm management

- In-built navigation zone within Workspace providing a instant visual alarm summary, with immediate focus to abnormal situations, showing the highest priority alarm for a piece of equipment
- Alarm indicators to quickly draw operators' attention and help locate the source of anomalies and associated severity
- Alarm Shelving allowing you to temporarily silence alarms for a specific duration or until a specified time, with the ability to re-shelve as needed
- Define up to 8 Cause(s), Response(s), and Consequence(s) for your alarms to give your operators the information they need to deal with abnormal situations

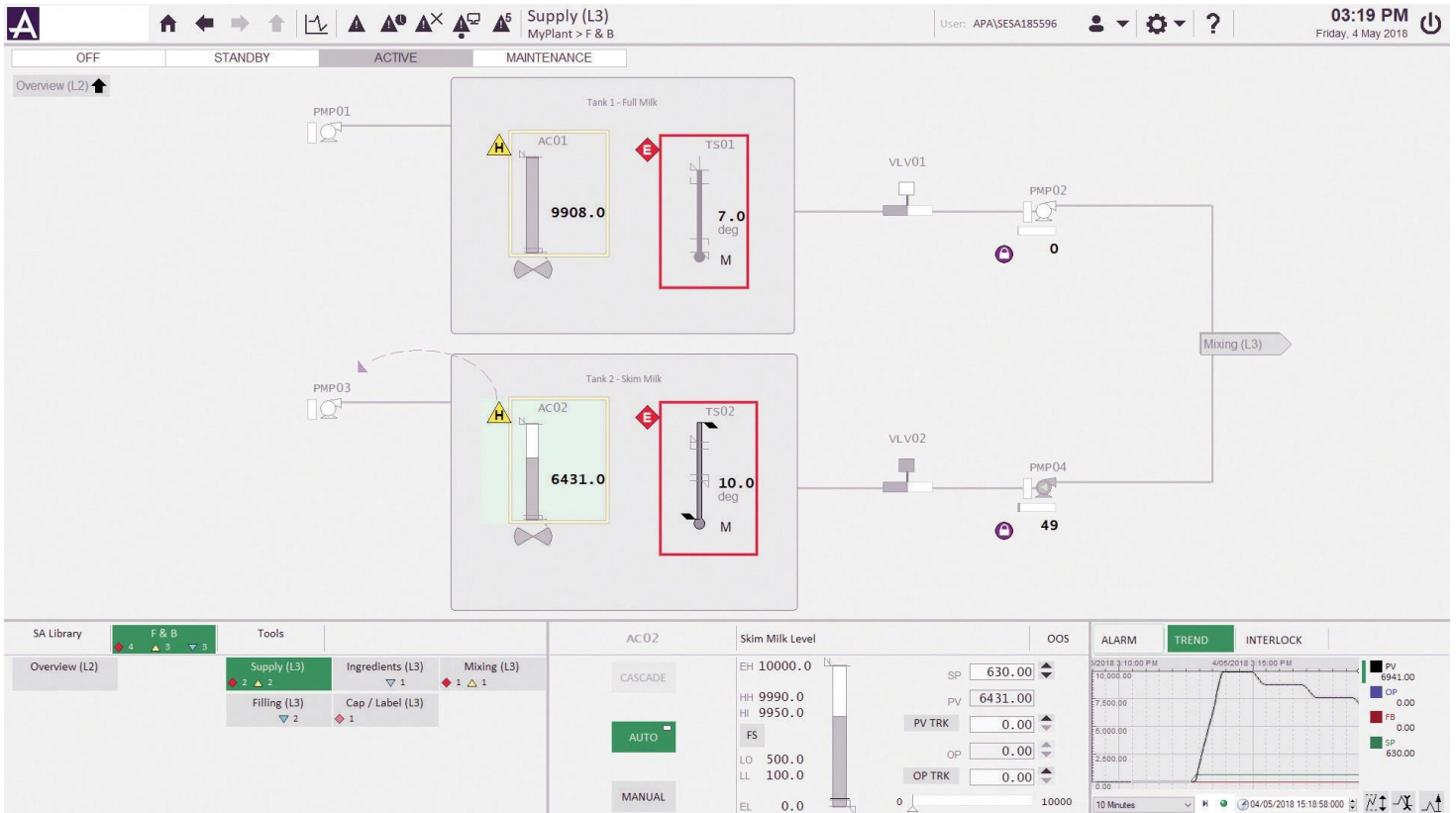
# Seamless integration

The latest release of AVEVA Plant SCADA offers native connectivity with our industrial software suite and tight application integration with third-party hardware and software offerings, helping to unlock and extend the value of our customers' SCADA systems.

AVEVA Plant Access Anywhere is a mobile extension of AVEVA Plant SCADA that provides unprecedented real-time access to AVEVA applications via HTML5-compliant web browsers. AVEVA Plant Access Anywhere enables visualization, collaboration, and execution at various levels of the organization with zero client installation and maintenance, enabling users to securely troubleshoot plant equipment from any location, on any device, at any time.

## Summary

- Seamlessly weave Visualization, Alarms, Trends, Interlocks and Control together for superior operational context
- Build an effective SCADA system out-of-the-box faster than ever before
- Comprehensive Library and Operational Content out-of-the-box
- Increase Operator effectiveness in all situations
- Any Citect SCADA system can upgrade to embrace the new features



Context-aware workspace



**BAUTEK Bilgi Teknolojileri**



**[www.bautek-tr.com](http://www.bautek-tr.com)**



**BAUTEK Endüstriyel Otomasyon  
Yazılım Çözümleri**

